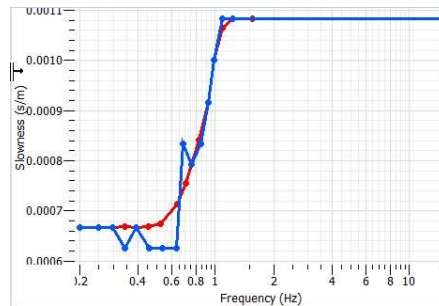
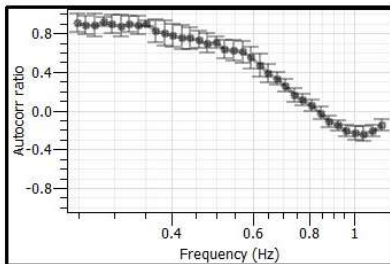


Autocorr target

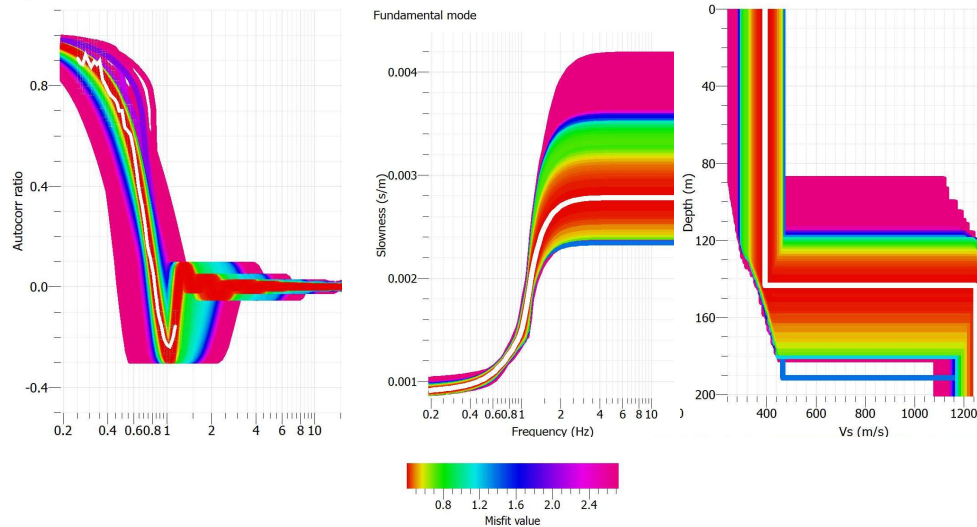
Ring 1 from 220 m to 475 m



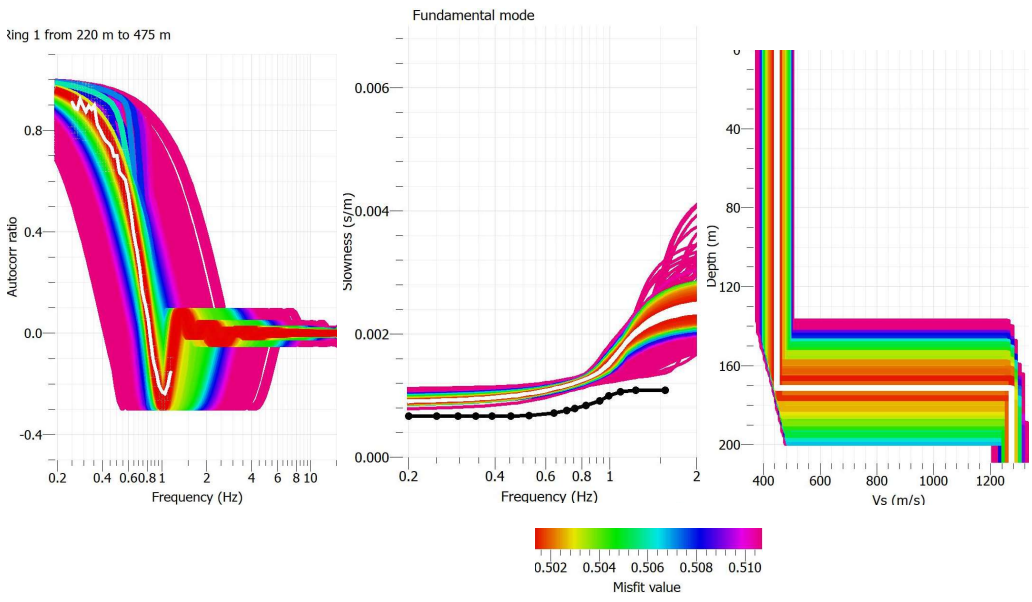
DC – DC edited

SPAC curve inversion – one layer over an half-space, no V constrains, H max 200m

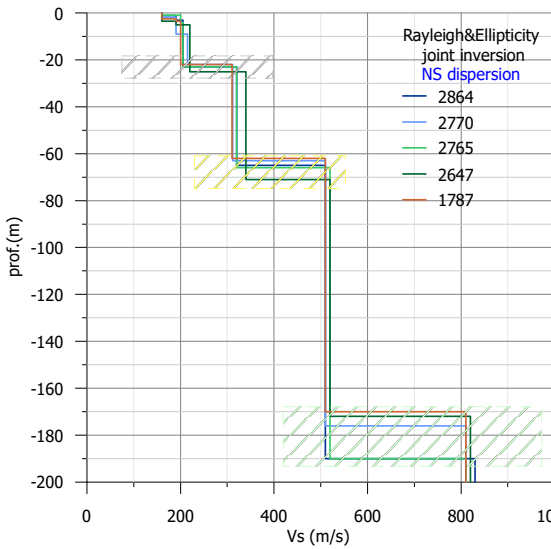
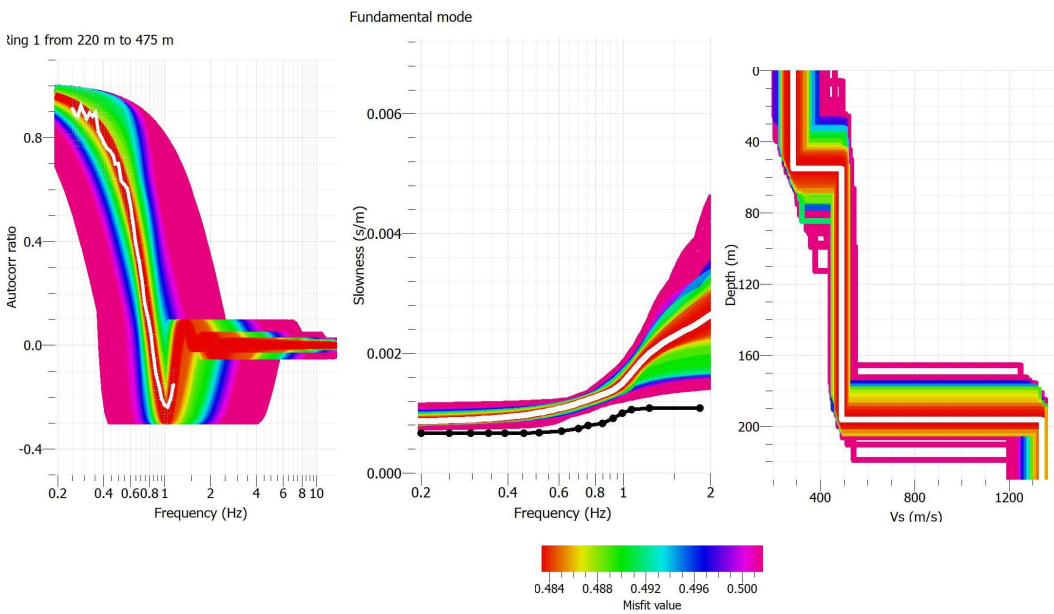
Ring 1 from 220 m to 475 m



SPAC curve-DC joint inversion – one layer over an half-space, no V constrains, H max 200m



SPAC curve-DC joint inversion – two layers over an half-space, no V constrains, H1 max 100m, 2max=300m



HVDC Diver joint inversion (ReMi DC)