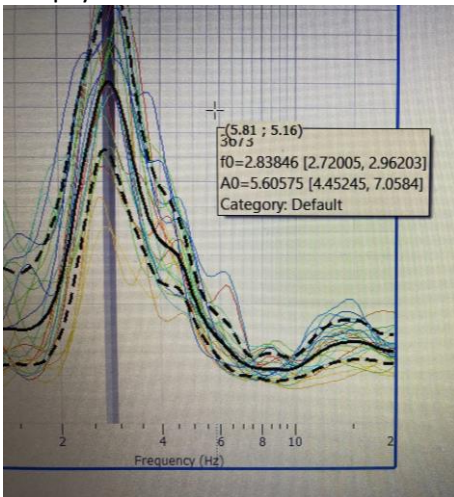


		E5		2.83449					
#		A	B	C	D	E	F	G	H
1	#	GEOPSY	output	version	=	1.1			
2	#	Number	of	windows	=		31		
3	#	f0	from	average		2.79781			
4	#	Number	of	windows	for	f0	=		31
5	#	f0	from	windows		2.83449	2.64174	3.02724	
6	#	Peak	amplitude			4.45849			
7	#	Frequency	Average	Min	Max				
8	#	1	1.47068	0.952139	2.27163				
9	#	1.03072	1.42483	0.921008	2.20426				

Geopsy 2.10



		E5		2.83449					
#		A	B	C	D	E	F	G	H
1	#	GEOPSY	output	version	=	1.1			
2	#	Number	of	windows	=		24		
3	#	f0	from	average		2.821			
4	#	Number	of	windows	for	f0	=		
5	#	f0	from	windows		2.83554	2.71771	2.95849	
6	#	f0	amplitude			5.60247			
7	#	Position	Default	0	0	0			
8	#	Category	Default						
9	#	Frequency	Average	Min	Max				
10	#	1	2.397	1.49073	3.85423				

Geopsy 3.4.2