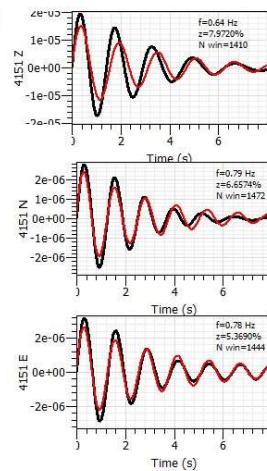


Qt Damping toolbox

Time limits
From T0 22-07-13 11:13:00.000000
To End 22-07-13 11:44:00.000000
Reference signal

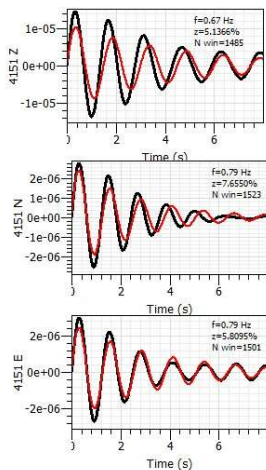
Filter signals before processing
Band pass From 0.50 Hz to 1.10 Hz
Filter method
 Butterworth filter (outphasing) Causal
Order of Butterworth's filter 4
 Frequency domain filter
Window type Tukey
Width (alpha/2) 25.00 %
Window length 8.00 s
Fitting length 8.00 s
Load parameters Start



Qt Damping toolbox

Time limits
From T0 22-07-13 11:13:00.000000
To End 22-07-13 11:44:00.000000
Reference signal

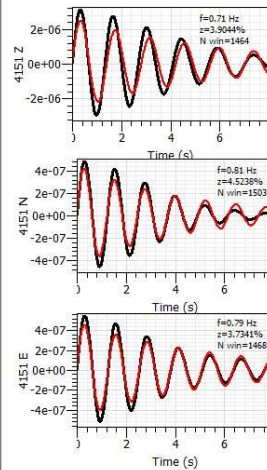
Filter signals before processing
Band pass From 0.50 Hz to 1.10 Hz
Filter method
 Butterworth filter (outphasing) Causal
Order of Butterworth's filter 8
 Frequency domain filter
Window type Tukey
Width (alpha/2) 25.00 %
Window length 8.00 s
Fitting length 8.00 s
Load parameters Start



Qt Damping toolbox

Time limits
From T0 22-07-13 11:13:00.000000
To End 22-07-13 11:44:00.000000
Reference signal

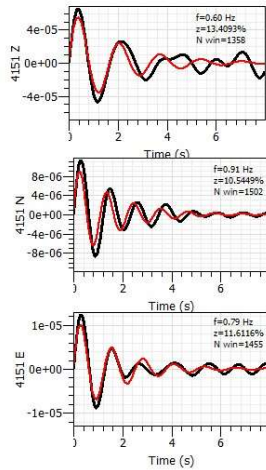
Filter signals before processing
Band pass From 0.60 Hz to 1.00 Hz
Filter method
 Butterworth filter (outphasing) Causal
Order of Butterworth's filter 4
 Frequency domain filter
Window type Tukey
Width (alpha/2) 25.00 %
Window length 8.00 s
Fitting length 8.00 s
Load parameters Start



Qt Damping toolbox

Time limits
From T0 22-07-13 11:13:00.000000
To End 22-07-13 11:44:00.000000
Reference signal

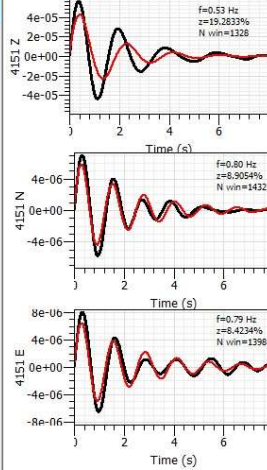
Filter signals before processing
Band pass From 0.60 Hz to 1.00 Hz
Filter method
 Butterworth filter (outphasing) Causal
Order of Butterworth's filter 8
 Frequency domain filter
Window type Tukey
Width (alpha/2) 25.00 %
Window length 8.00 s
Fitting length 8.00 s
Load parameters Start



Qt Damping toolbox

Time limits
From T0 22-07-13 11:13:00.000000
To End 22-07-13 11:44:00.000000
Reference signal

Filter signals before processing
Band pass From 0.40 Hz to 1.20 Hz
Filter method
 Butterworth filter (outphasing) Causal
Order of Butterworth's filter 4
 Frequency domain filter
Window type Tukey
Width (alpha/2) 25.00 %
Window length 8.00 s
Fitting length 8.00 s
Load parameters Start



Qt Damping toolbox

Time limits
From T0 22-07-13 11:13:00.000000
To End 22-07-13 11:44:00.000000
Reference signal

Filter signals before processing
Band pass From 0.40 Hz to 1.20 Hz
Filter method
 Butterworth filter (outphasing) Causal
Order of Butterworth's filter 8
 Frequency domain filter
Window type Tukey
Width (alpha/2) 25.00 %
Window length 8.00 s
Fitting length 8.00 s
Load parameters Start